



G O P A L A N  
**OLYMPIA**  
OFF MYSORE ROAD  
THE SPORTS CITY



G O P A L A N  
**OLYMPIA**  
← OFF MYSORE ROAD →  
THE SPORTS CITY



# About the developer

Gopalan Enterprises, in the last three decades, has established itself as a standard of quality and trust. The Company commitment to innovation, integrity and customers needs is reflected in its happy customers. With over 10 million square feet of constructed space, Gopalan Enterprises is a leader in its domain.

Gopalan Enterprises has diversified from its initial offering of Residential apartments to Malls, Commercial Spaces, Cinemas, Bowling Alleys, Education (Schools and Colleges), Skill Academies, Organic Farming, Coworks and now Aerospace and Hospitality.

Gopalan Enterprises has constructed more than 6400 residential units in Bangalore—including apartments and row houses. 34 completed projects and 4 under construction make the company one of the largest builders in Bangalore.



**66**  
Projects Built



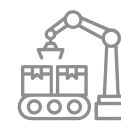
**6402**  
Residential Units



**1.6** mn sqft  
Retail Space



**4** mn sqft  
Commercial Space



**10** mn sqft  
Under Construction



# Awards & Recognitions



Global Real Estate  
Brand Awards



CNBC Awaaz



Construction Times



International Brand Equity  
(Goa)



Quikr  
(Bangalore)



Asia One Awards  
(Singapore)



ETNow  
(Mumbai)

# Testimonials



**Pratap Kanna**  
Flat A-502

I have booked a flat in Gopalan Olympia. The staff were very supportive and give you information or details about the project regardless how many times you ask for. The project is too good when compared to leading builder in terms of planning, amenities, quality of fitments etc. The project is also located in a very commutable location to major places in the city. I would definitely suggested to anyone looking for a flat in particular range.

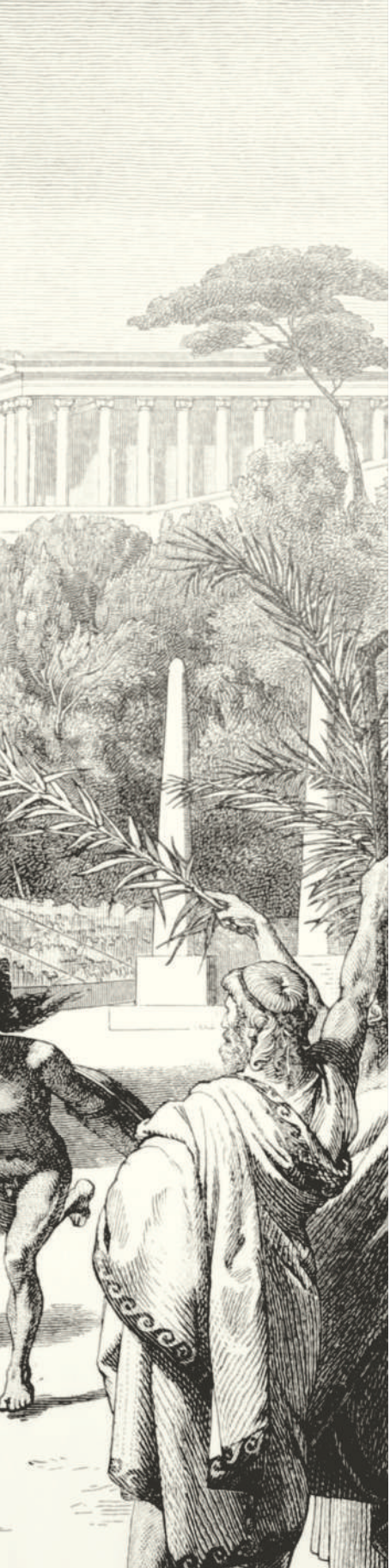


We are happy to be a part of Gopalan Olympia. We appreciate the construction. We fell in love with space and ventilation of the property. Best of luck.

**V. Sundara Mahalingam & S. Meenarani**  
Flat I-1006







G O P A L A N  
**OLYMPIA**  
OFF MYSORE ROAD  
THE SPORTS CITY

Olympia, in the Greek world, was an ode to Lord Zeus, King of the Greek Gods. An intricate melange of serenity and natural beauty, Olympia became a hub for sports and culture-a hub that influences the world from prehistoric times till date.

From this exceptional testimony to quality and timelessness and its focus on encouraging fitness of mind and spirit, Gopalan Enterprises presents Gopalan Olympia - An Arcadia that encourages you to find time for yourself and your body, vast open spaces that invite you to reconnect with nature and contemporary luxuries that soften your journey.

At Olympia, it's not about winning a game, it's about feeling one with the game.



1

2

3

4

5

10

9

8

7

6

15

14

13

12

11



## Master plan

- 1 Cricket Practice Net
- 2 Elders Seating Pergola
- 3 Elders Seating
- 4 Kids Play Area
- 5 Outdoor Exercise Area
- 6 Football Court
- 7 Swimming Pool
- 8 Tennis Court
- 9 Badminton Court
- 10 Club House
- 11 Elders Seating
- 12 Senior Citizen's Plaza
- 13 Yoga & Meditation
- 14 Children's Play Area
- 15 Services







## Football

A full fledged football field so that your evenings are spent watching your child perfect his/her sport while you get extra time for you.





## Tennis

Take advantage of the multiple tennis courts on the clubhouse rooftop. Ace up and get set to fine tune that forehand, backhand, volley and break!











G O P A L A N  
**OLYMPIA**  
OFF MYSORE ROAD  
THE SPORTS CITY

## The Lifestyle You Dream of

Options ranging from 2 bedrooms to 3 bedrooms, and multiple floor plans, Gopalan Olympia caters to different lifestyle needs of different residents. From Sports to shopping, from peaceful walkways to zen like meditation centres, the project blends style with fun to make homes that promise a lifetime of happy moments. .







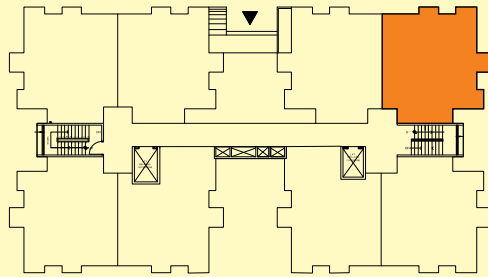
G O P A L A N  
**OLYMPIA**  
OFF MYSORE ROAD  
THE SPORTS CITY

## Living Room

Wide, airy, well lit living rooms that are inviting and friendly, make your home a place you look forward to coming back to each day.



BLOCK - I  
 G+ 13 FLOORS



Typical Floor Key Plan

Disclaimer: 1. All dimensions are in metric, measured to wall finishes. 2. All materials, dimensions & drawings are approximate. 3. Information is subject to changes without notice, at developer's absolute discretion. 4. Actual area may vary from the stated area. 5. Drawings are not to scale. 6. All images used are for illustrative purposes only and do not represent the actual size, features, specifications, fittings and furnishings. 7. The developer reserves the right to make revisions / alterations at its absolute discretion.

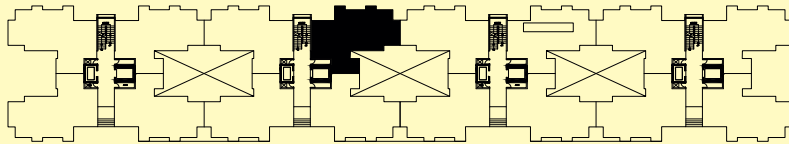
2 BED ROOM APARTMENT



2 BED ROOM APARTMENT - Level 1 to Level 13

- AREA - SBUA : 980 SQ. FT. (CA : 698 SQ. FT.)
- SBUA : 985 SQ. FT. (CA : 699 SQ. FT.)
- SBUA : 1020 SQ. FT. (CA : 720 SQ. FT.)
- SBUA : 1030 SQ. FT. (CA : 729 SQ. FT.)

BLOCK - C  
 G+ 13 FLOORS



Typical Floor Key Plan

3 BEDROOM APARTMENT



3 BEDROOM APARTMENT - Level 1 to Level 13

AREA - SBUA : 1360 SQ. FT. (CA: 959 SQ. FT.)



## Kitchen

Spaces that turn cooking into an art and a chore to a hobby, these kitchens are crafted to perfect your skills with maximum ease and sheer practicality and dollops of fun.











## Master Bedroom

Be yourself, relax and rejuvenate in your personal space. Let the verdant outdoors soothe your mind and the luxury inside pamper you.



Homes that Invigorate  
body and soul









G O P A L A N  
**OLYMPIA**  
OFF MYSORE ROAD  
THE SPORTS CITY

## Harmony and Serenity

"In the grey summer garden I shall find you  
With day-break and the morning hills behind you.  
There will be rain-wet roses; stir of wings;  
And down the wood a thrush that wakes and sings.  
Not from the past you'll come, but from that deep  
Where beauty murmurs to the soul asleep:  
And I shall know the sense of life re-born  
From dreams into the mystery of morn  
Where gloom and brightness meet. And standing there  
Till that calm song is done, at last we'll share  
The league-spread, quiring symphonies that are  
Joy in the world, and peace, and dawn's one star"

- Siegfried Sassoon





## CLUB Life @ Arcadia

The 60,000 square feet clubhouse replete with every comfort and convenience that can make home that haven that you seek. From a departmental store to saloon, a yoga room to a library, kids centre, bowling alley and even a mini theatre to unwind, Arcadia makes sure you dont need to step out into the traffic. Stroll, chat, get fit or softly unwind











G O P A L A N  
**OLYMPIA**  
OFF MYSORE ROAD  
THE SPORTS CITY

## Ready...Get Set.....Relax

This Ready to Move-in home of your aspirations awaits you. Designed with your preferences in mind, your convenience at your doorstep, your leisure a priority, your fitness our goal, Gopalan Olympia presents a home that delights you.



Football



Basket Ball



Jogging Track



Lawn Tennis



Swimming Pool



Bowling



Badminton



Mini Theater



Gym



Billiards



Yoga Center



Table Tennis

Kid's Play Area



Spa



Library



Cricket

G O P A L A N  
**OLYMPIA**  
OFF MYSORE ROAD  
THE SPORTS CITY



**2** MINUTES

Gopalan National School (south)



**5** MINUTES

Rajarajeswari Dental college and Hospital



**10** MINUTES

NICE Road Kengeri Road Junction



**10** MINUTES

Kengeri Metro Station



**22** MINUTES

The Eagleton Golf Course



**22** MINUTES

Gopalan Arcade Mall



**23** MINUTES

Global Village



**27** MINUTES

Bangalore University Campus





Anandamaiyee Temple  
ಶ್ರೀ ಶಿರಡಿ  
ಸಾಯಿ...

Bheemanakuppe  
ಭೀಮನಾಕುಪ್ಪೆ

Ring Road

Challegatta  
ಚಲೆಗಟ್ಟಾ

ಬೆಂಗಳೂರು

Slv Prinss

KENGERI  
ಕೆಂಗೇರಿ

Omkar Ash  
Maha Sama  
ಓಂಕಾರ ಬೆಟ್ಟ

Dodda Alaknara Road

275

48

Asirvan  
Benedictine Monastery

KUMBALGUDU

Gopalan Olympia

Resort  
ರಿಸಾರ್ಟ್

Gudimavu  
ಗುಡಿಮಾವು

Thagachaguppe  
ತಗಾಚಗುಪ್ಪೆ



NICE Bangalore Mysore Express

apura  
ಮಪುರ

Atmashrama

Lord Shri Krishna  
Temple Doddipalya

Rachanamadu  
ರಚನಮಡು

Agara Lake



# Specifications

## STRUCTURE

- » Basement + Ground + 13 storied RCC Slab & Shear walls

## CAR PARKING

- » Covered car parks in basement level
- » Visitors' car parks on ground level

## FOYER/LIVING/DINING/BEDROOMS

- » Superior quality vitrified tile flooring and skirting

## PAINTS

- » Plastic emulsion for interiors
- » Weather proofed acrylic emulsion for exteriors

## TOILETS

- » Superior quality ceramic for wall tiling up to ceiling height.
- » Superior quality ceramic for floor

## KITCHEN

- » Superior quality vitrified tile flooring
- » Superior quality ceramic tiling dado 2'-0" above platform
- » Stainless steel single bowl sink with drain board in utility

## BALCONIES/UTILITIES

- » Superior quality ceramic tile flooring and skirting
- » Mild steel handrail

## LOBBY / STAIRCASE

- » Granites for flooring treads & risers
- » Texture finish for walls
- » Mild steel handrail

## COMMON AREAS

- » Granite / equivalent flooring
- » Superior quality ceramic tile cladding up to ceiling
- » Plastic emulsion for ceiling

## JOINERY

- » Main door and bedroom doors of both sides masonite skin with Timber frame & architraves
- » Toilet door of timber frame and architraves. Shutter with Masonite skin on the external side and laminate on the internal side
- » High quality ironmongery and fittings for all doors
- » Heavy-duty aluminium windows made from specially designed and manufactured sections

## LIFTS

- » Total no. of 40 lifts of reputed make
- » Capacity - 20 no's of 13 passengers & 20 no's of 13 passengers

## LANDSCAPE

- » Designer landscaping

## COMMON FACILITIES

- » Well-equipped clubhouse
- » Swimming pool
- » Children's play area

## PLUMBING & SANITARY

- » Sanitary fixtures of reputed make in all toilets
- » Chromium plated fittings of reputed make in all toilets

## ELECTRICAL SPECIFICATIONS

- » BESCOM power supply of three phase 5 Kilo Watt per flat
- » Stand by power (Generator back-up) of Kilo Watts for each unit
- » 100% stand by power (Generator back-up) common facilities
- » Provision for AC in bedrooms
- » Intercom facility provided from security cabin to each apartment

### Specification Disclaimer

The views shown are artist's impression only. | The size, shape, and position of doors / windows, columns, design of railings and various other elements are subject to change. | The furniture / fixtures, including counter in kitchen, is shown to indicate the space available and likely position of electrical points are not a part of standard specifications. | The finishes - flooring, tiles in toilet, kitchen, utility, balconies, etc., paint colour, door finish / colour and any other finishes are only indicative and are subject to change. | The dimensions and areas shown are from block to block, without considering any plaster & finish.

Gopalan Enterprises reserves the right to change specifications without prior notice, in the interests of quality and timely delivery. We request our valuable customers to note that any such changes made will not, in any way, be detrimental to the quality of the building.

SEZ



Shopping Malls



Hospitality



Organic Farm



Schools



Coworks



Colleges



Sports Centre



Aerospace



IT Parks



Skill Academy



Cinemas





## The Team

# With the Highest Standards

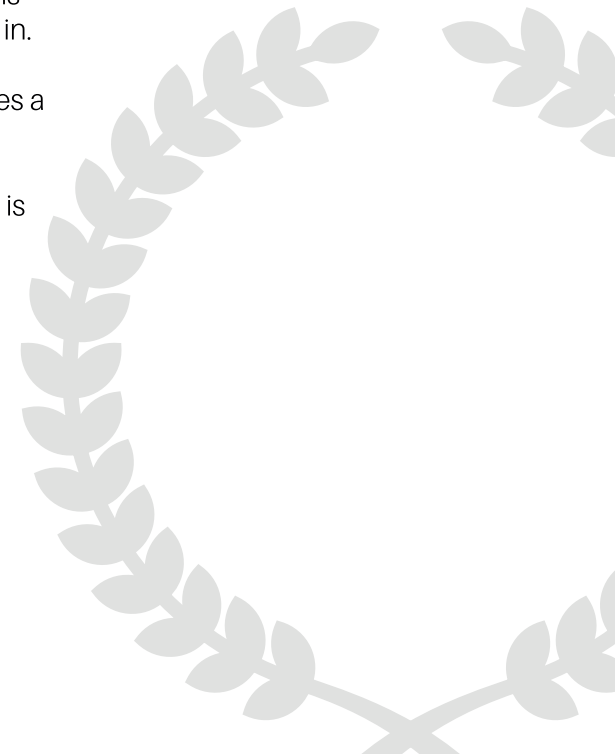
As a dynamic and vibrant team of design and construction professionals, Gopalan Group brings an acute awareness of the importance of quality, safety, community and environment to every project.

Gopalan's track record over the past decade includes Award-winning projects and successful delivery of quality residential, commercial and retail projects.

The highly qualified leadership team and its trusted allies in the architecture, planning and trade domains approach every project with the aim of creating a place where those who live and work in can take pride in.

Gopalan listens to the market and its clients and operates with an openness and transparency that ensures a sense of cooperation and mutual focus on the desired outcome

Through meticulous project planning and scheduling Gopalan ensures that the quality of workmanship is impeccable and that the end result is one that enriches the urban environment and has lasting value.









# 5/1, Gopalan Enterprises, Rich Homes, Richmond Road, Bangalore 560025, Ph. No.080-49314931

E-mail:sales@gopalanenterprises.com, Website :www.gopalanenterprises.com